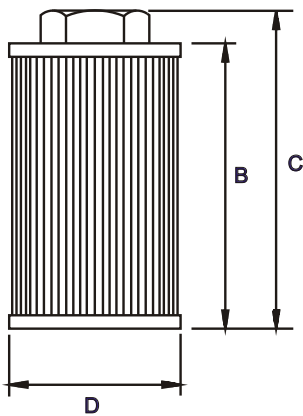
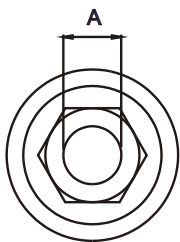
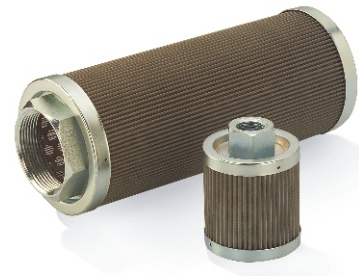


# SUCTION STRAINER

- REUSABLE STAINLESS STEEL 100 MESH STANDARD
- STURDY ALL METAL PLATE STEEL CONSTRUCTION
- FILTRATION 149 MICRONS
- CONTINUOUS EPOXY BOND
- MAX. WORKING TEMP. 80° C.
- SUITABLE FOR HYDRAULIC / MINERAL OIL



MODEL NO	FLOW LPM	THREAD IN. BSPP A	OVERALL LENGTH B	DIA NUT CAP C	NUT D	SCREEN AREA (SQ. CMS)	WT KGS
SC 2 - 003	12	1 / 4	50	62	57	162	0 . 16
SC 2 - 005	20	3 / 4	50	62	66	258	0 . 24
SC 2 - 007	28	3 / 4	75	87	66	387	0 . 28
SC 2 - 010	40	1	100	112	66	516	0 . 30
SC 2 - 015	60	1 - 1 / 4	125	137	78	806	0 . 34
SC 2 - 020	80	1 - 1 / 2	150	162	85	1032	0 . 44
SC 2 - 030	120	1 - 1 / 2	180	192	85	1450	0 . 48
SC 2 - 040	160	2	200	212	100	1935	0 . 58
SC 2 - 050	200	2	225	237	100	2195	0 . 68
SC 2 - 075	300	2 - 1 / 2	180	195	140	2580	0 . 90
SC 2 - 100	400	3	225	240	140	3225	1 . 05
SC 2 - 150	600	3	325	340	140	4680	1 . 25

MODEL CODE : ASSEMBLY

SC 2	- 010	_ **	_ **	_ **
SERIES	SIZE	PORT THDS. OPTIONAL #	MICRONS. OPTIONAL #	FEATURE. SPECIAL #
		<b>BSPP</b> - STD	<b>149</b> -SS 100 MESH (STD)	
		<b>NPT</b> - OPTIONAL	<b>125/ 74 / 63</b> -OPTIONAL	

OMIT IF STANDARD

CONSULT FACTORY, FOR OPTIONAL / SPECIAL FEATURE