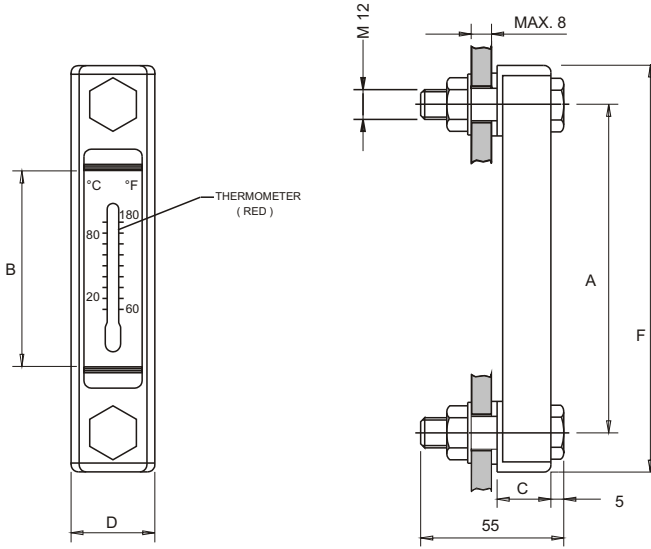


# LEVEL GAUGE

- 'O' RING TYPE CONSTRUCTION
- 3 SIZES 3", 5" & 10" BETWEEN BOLT CENTRES
- FOR NON PRESSURISED TANKS ONLY
- CAN BE MOUNTED ON TAPPED HOLES
- SUITABLE FOR MINERAL / PETROLEUM BASED OILS
- MAXIMUM TEMPERATURE 80° C



| MODEL    | A   | B   | C  | D  | F   | WT<br>KGS |
|----------|-----|-----|----|----|-----|-----------|
| LG2 - 03 | 76  | 37  | 20 | 34 | 108 | 0.20      |
| LG2 - 05 | 127 | 76  | 20 | 34 | 159 | 0.25      |
| LG2 - 10 | 254 | 203 | 20 | 34 | 286 | 0.30      |

## MODEL CODE : ASSEMBLY

| LG 2   | - 05     | T                                     | - M 10                             |
|--------|----------|---------------------------------------|------------------------------------|
| SERIES | SIZE     | FEATURE                               | FEATURE                            |
|        | INCH     | OPTIONAL #                            | SPECIAL #                          |
| LG 2   | 03 - 3"  | T - THERMOMETER<br>(OMIT IF NOT REQD) | M12 - STD<br>(M12 X 1.75 BOLT)     |
|        | 05 - 5"  |                                       | M10 - SPECIAL<br>(M10 X 1.50 BOLT) |
|        | 10 - 10" |                                       | UNC - SPECIAL<br>(1/2" - 13 UNC)   |

NOTE : BOLT TORQUE TO BE LIMITED TO 3 FT LBS  
# OPTIONAL / SPECIAL FEATURE - OMIT IF NOT REQUIRED

